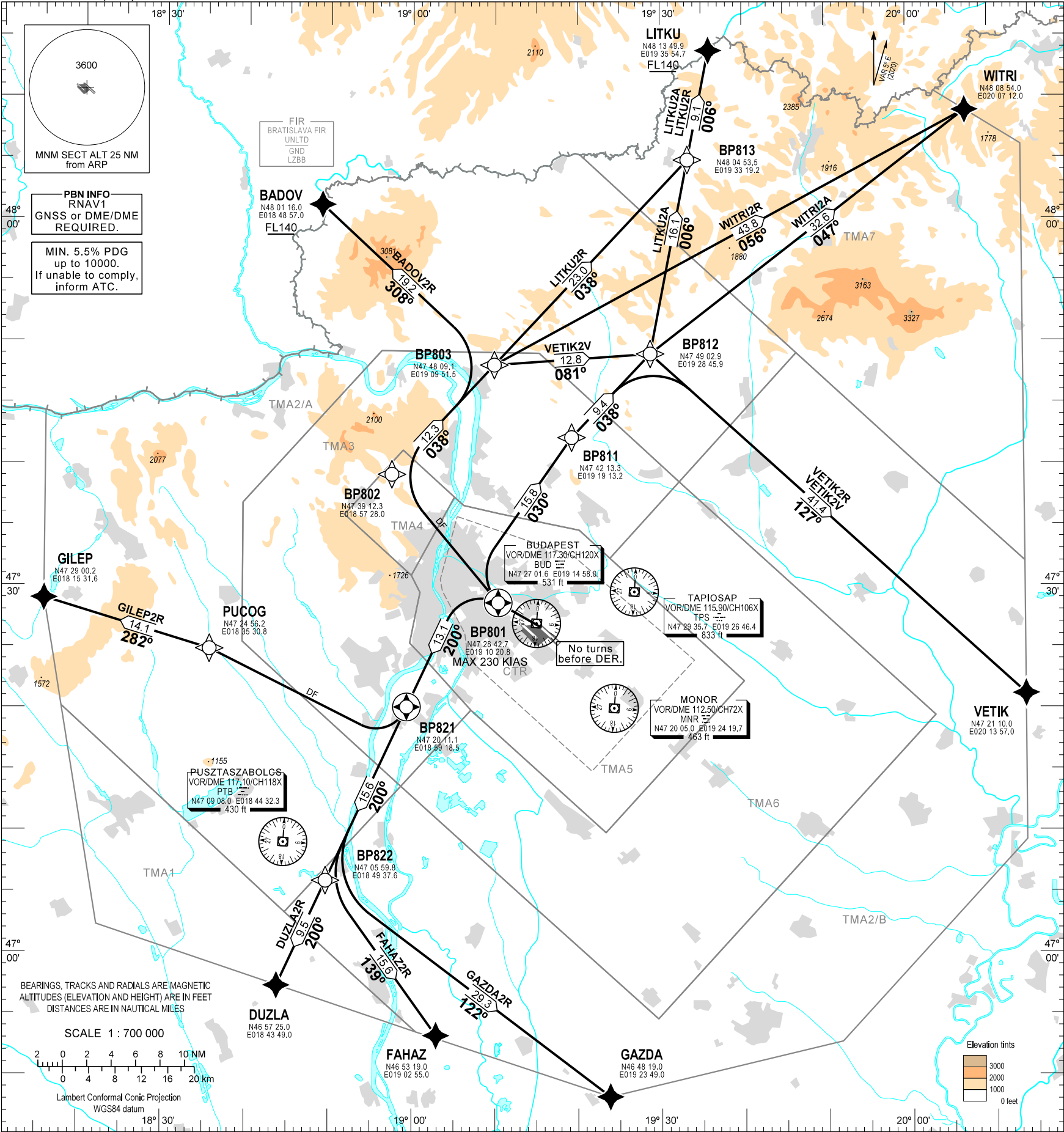


STANDARD DEPARTURE CHART -
INSTRUMENT (SID) - ICAO



BUDAPEST APP	122.980	123.860	BUDAPEST GROUND	121.905
BUDAPEST TOWER	118.715	ATIS	132.380 (117.300)	
BUDAPEST INFORMATION (NORTH)	119.350	(NORTH-EAST)	134.855	

BUDAPEST/LISZT FERENC
RNAV RWY 31R
BADOV2R, DUZLA2R, FAHAZ2R, GAZDA2R, GILEP2R,
WITRI2A, WITRI2R, LITKU2A, LITKU2R, VETIK2R, VETIK2V

An aeroplane should not be diverted from its assigned route unless:
it is necessary for the safety of the aeroplane (e.g. for avoidance of severe weather or to resolve a traffic conflict).

CLIMBING:
Min. 5.5% PDG up to 10000. If unable to comply, inform ATC. After departure climb initially 7000. Further climb only by ATC.

CONTACT:
If pilot not otherwise instructed by Budapest TWR, all departing aircraft, irrespective of the assigned SID, when passing 3000, shall contact Budapest APP on 122.980 CH.

R/T FAILURE:
If a departing controlled aircraft having acknowledged an initial (eg. 7000) or intermediate clearance, to climb to a level other than the one specified in the filed FPL for the en-route phase of the flight and no time or geographical limit was included in the clearance, should maintain for a period of seven minutes the level (eg. 7000) to which it was cleared and then should climb to the level included in the filed FPL unless the cruising level was definitely specified in the en-route clearance.

SID NAME	PROCEDURE	RESTRICTIONS
VETIK2R (VETIK TWO ROMEO DEPARTURE)	To BP801 climb on course 295°, no turns before DER. To BP811 on course 030°, to BP812, to VETIK.	MAX 230 KIAS at BP801.
VETIK2V (VETIK TWO VICTOR DEPARTURE)	To BP801 climb on course 295°, no turns before DER. Direct to BP802. To BP803, to BP812, to VETIK.	
WITRI2A (WITRI TWO ALFA DEPARTURE)	To BP801 climb on course 295°, no turns before DER. To BP811 on course 030°, to BP812, to WITRI.	
WITRI2R (WITRI TWO ROMEO DEPARTURE)	To BP801 climb on course 295°, no turns before DER. Direct to BP802. To BP803, to WITRI.	
LITKU2A (LITKU TWO ALFA DEPARTURE)	To BP801 climb on course 295°, no turns before DER. To BP811 on course 030°, to BP812, to BP813, to LITKU at or above FL140.	
LITKU2R (LITKU TWO ROMEO DEPARTURE)	To BP801 climb on course 295°, no turns before DER. Direct to BP802. To BP803, to BP813, to LITKU at or above FL140.	
BADOV2R (BADOV TWO ROMEO DEPARTURE)	To BP801 climb on course 295°, no turns before DER. Direct to BP802. To BP803, to BADOV at or above FL140.	
GILEP2R (GILEP TWO ROMEO DEPARTURE)	To BP801 climb on course 295°, no turns before DER. To BP821 on course 200°. Direct to PUCOG. To GILEP.	
DUZLA2R (DUZLA TWO ROMEO DEPARTURE)	To BP801 climb on course 295°, no turns before DER. To BP821 on course 200°. To BP822, to DUZLA.	
FAHAZ2R (FAHAZ TWO ROMEO DEPARTURE)	To BP801 climb on course 295°, no turns before DER. To BP821 on course 200°. To BP822, to FAHAZ.	
GAZDA2R (GAZDA TWO ROMEO DEPARTURE)	To BP801 climb on course 295°, no turns before DER. To BP821 on course 200°. To BP822, to GAZDA.	

Recommended navaid: BUD VOR.

BUDAPEST TMA						BUDAPEST CTR	
TMA1		TMA3		TMA6		CTR	
TMA2/A		TMA4		TMA7			
TMA2/B		TMA5					

THIS PAGE IS INTENTIONALLY LEFT BLANK